

OO

OOOLTER

Add life to your days

Electric Bike Owner's Manual

Oolter EKE / ETТА / TORM

IMPORTANT! Read carefully and keep for future reference.



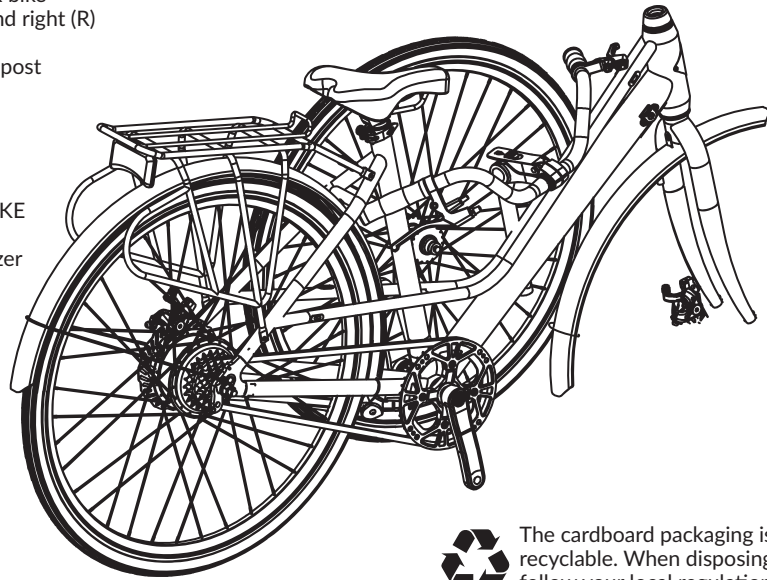
Contents

- 1. In the Box 2
- 2. Frame Number..... 2
- 3. Setup 3
- 4. Diagram 4
- 5. Powering On and Off..... 5
- 6. Operating the Display 5
- 7. Before You Ride 6
- 8. Charging 6
- 9. Battery Safety and Maintenance 7
- 10. Disposal at End-of-Life 7
- 11. Charger Safety 8
- 12. Maintenance 9
- 13. Specifications 10
- 14. Warnings 11
- 15. Warranty 11
- 16. Disclaimer, Copyright Notice and Trademarks 12
- 17. Contact 12

1. In the Box

OOLTER bikes will arrive in a cardboard box. You may choose to let the dealer or service-provider assemble the bike for you. In the box, you'll find:

- your new OOLTER bike
- 2 pedals: left (L) and right (R)
- handlebar
- seat with the seat post
- front wheel
- reflector
- bell
- display
- charger
- front mudguard (EKE and ETTA)
- front cable organizer (EKE and ETTA)
- user manual



The cardboard packaging is recyclable. When disposing it, follow your local regulations. Save the trees - 1 ton of new cardboard requires 17 trees.

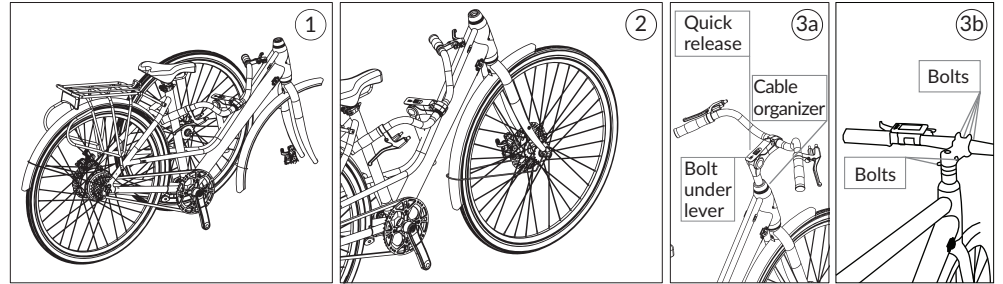
2. Frame Number

Each OOLTER e-bike has a unique frame number. The frame number is located on the underside of the bottom bracket. You are going to need this number when there is any problem or question you may have about your bike.

Keep the frame number saved for future reference.

You will also need the frame number in case you intend to have your bike insured.

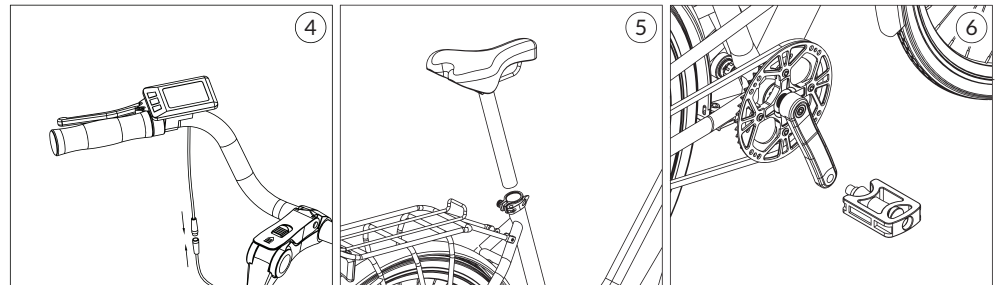
3. Setup



1 Carefully remove the bicycle and ready-to-assemble parts from the cardboard box. Cut the cable ties when necessary. Check if all needed items are in the package. In case any items missing, please contact your dealer or service-provider.

2 Fix the front mudguard to the front fork using the M6 screw provided and then the 2 sides of the support with the M5 screws provided (EKE and ETTA). Align and fix the front wheel to the front fork and tighten (20Nm) the axle nuts (quick release lever for TORM). Make sure the front fork is positioned with the brake caliper facing the rear side of the bike.

3a Attach the front cable organizer to the position indicated on diagram 3a (EKE and ETTA). Place the handlebar assembly into the front fork riser, align the handlebar with the front wheel. On EKE / ETTA tighten the gooseneck bolt under the stem adjustment quick release and then fix the quick release lever. On TORM, tighten the bolts indicated on Figure 3b (max 5Nm).



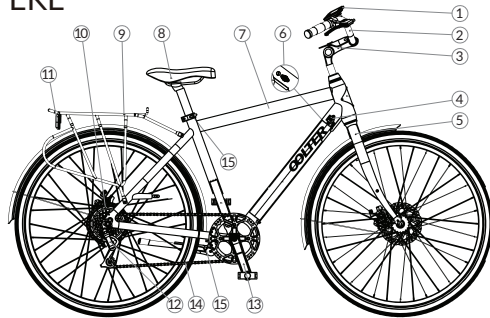
4 Attach the reflector and bell to the handlebar. The display is installed on the left side of the handlebar. Adjust it to the position pictured on diagram 4. Fasten the display to the handlebar using the M3 screw on the underside of the display and connect the display cable.

5 Insert the seat into the middle tube, adjust the height and tighten the seat latch. DO NOT position the seat-post below the minimum or higher than the maximum marker on the seat-post. Install the rear rack with screws provided

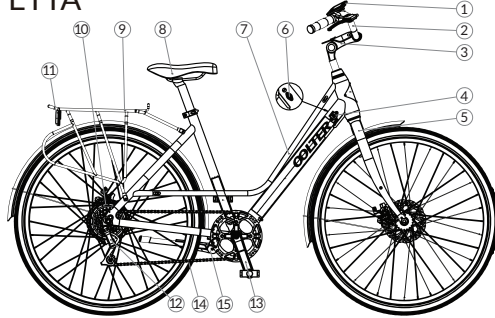
6 Install the left (L) and right (R - chain-side) pedals by turning them by hand first. Tighten with a 15mm wrench with no excess force (150Nm). Note that the pedals for the left and right side have different thread and cannot be mixed.

4. Diagram

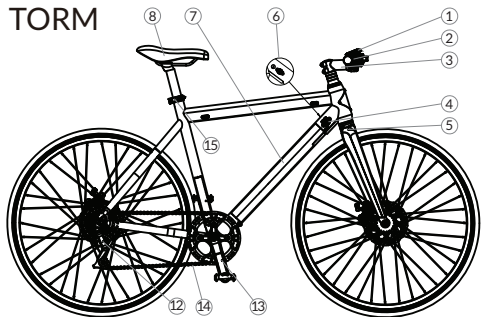
EKE



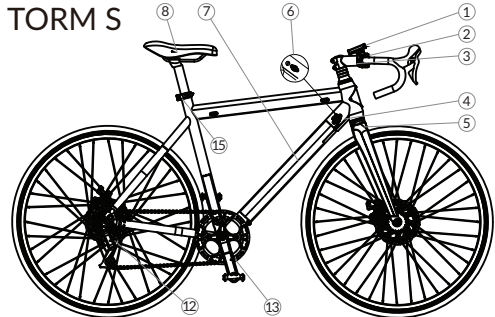
ETTA



TORM

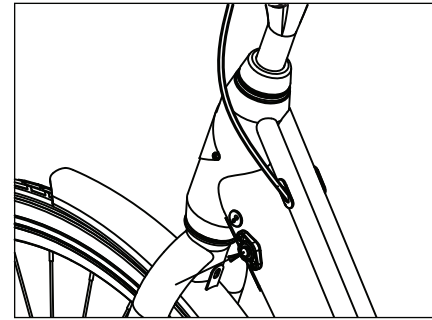


TORM S



- | | | |
|------------------|-----------------|---------------------|
| 1. Display | 6. Main switch | 11. Rear reflector |
| 2. Handlebar | 7. Frame | 12. Rear derailleur |
| 3. Stem | 8. Seat | 13. Pedals |
| 4. Charging port | 9. Luggage rack | 14. Chain |
| 5. Front Fork | 10. Motor | 15. Seat latch |

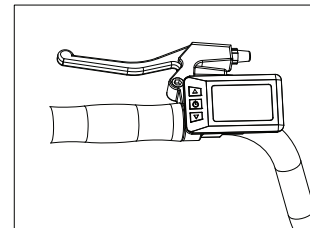
5. Powering On and Off



To turn the bike on, you first need to:
 1) Switch on the battery
 2) Activate the bike from the display.

To switch on the battery, push once the main switch located on the left side of the down tube. The blue light ring around the button will light up indicating that the battery is on. Once you are done riding, push the button once to switch off the battery.
NB! The blue light ring goes off with a delay of 5 seconds. In case you are not sure if the bike battery is on or off, check the display.
 Battery auto-off happens after 30 minutes idle. After the auto-off you need to push the main switch twice to switch the bike on again.

6. Operating the Display



For activating the display, press and hold the power button until the display lights up. Do the same again to deactivate the display. Display auto-off happens after 5 minutes idle.

Operation time display _____

Battery charge level _____

Press to change to a stronger assist level, hold down to turn on display backlight and the bikes headlight. (Headlight is only available on ETTA and EKE)

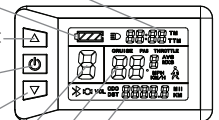
Press for 3 seconds to turn the bike on or off. Press the button briefly to change between the odometer, trip odometer display.

Press to change to a weaker assist level, hold down to turn on walk mode (max speed 6km/h)

Current assist level (1-5) _____

Speedometer _____

Odometer or trip meter display _____

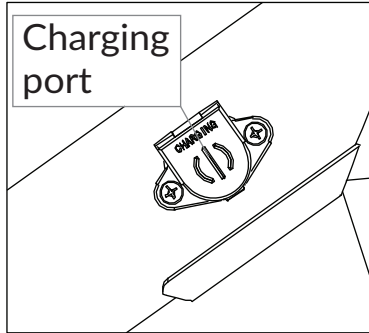


7. Before the First Ride

Please perform the following checks before the first ride:

- Recharge the battery to 100%.
- Check the tire pressure.
 - EKE / ETTA 35mm tire - recommended pressure 50-60PSI
 - TORM 32mm tire - recommended pressure 85-100PSI
 - TORM S 25mm tire - recommended pressure 90-105PSI
- Spin the wheels and check if they run freely
- Check the front and rear brakes separately and adjust if necessary to make sure the brakes perform well
- Check the drivetrain, if the chain runs freely
- Shift through the gears to see if they are properly actuated
- Check the handlebar, if it is aligned with the front wheel and securely tightened. Adjust for an optimal riding position if necessary.
- Adjust the seat height for optimal riding
- Check the lights and reflectors
- Check for any loose components and if the visual appearance seems all right.
- Pay attention to any noise and sounds that should not be there
- Familiarize yourself with the local laws and regulations on e-bikes, on safety and on how the bicycle traffic is regulated. NB! The speed limit for e-bikes in the European Union is 25km/h. Only pedal assist is allowed. This means the bike motor stops supporting the rider when the rider stops pedaling, or reaches the speed 25km/h.

8. Charging



Charging the e-bike is similar to charging your laptop. Use only the original Oolter charger. More information about safe operation of the charger can be found in Section 9: Charger Safety. Before charging, turn the e-bike off. The bike can be charged via the charging port on the top right of the down-tube. First insert the charger into the wall outlet and then connect it to the e-bike charging port. Specifications of the charger are provided in section 13. The total charging time from 0%-100% is about 3.5 hours. Charging is indicated by the red light on charger. When charging has been completed, the indicator light turns green. There is no risk of over-charging, as the charger automatically stops when the battery is full. It is recommended to charge to 100% once every while, to let the charger to complete the balancing of the battery cells. The charger is meant for indoor use only. Replace the charging port cover after finishing charging.

⚠ WARNING! DO NOT charge the e-bike if the charge port or power cord is wet, dirty, or obstructed with metal objects. **DO NOT** charge or use your battery if it is damaged or you see traces of water.

9. Battery Safety and Maintenance

The OOLTER e-bikes use one or two lithium-ion batteries. It is not permitted to use the batteries supplied with the OOLTER e-bikes with any other product. These batteries have been designed for the use of the OOLTER e-bikes only. Do not remove the battery from the e-bike. Only approved service centers should do it, if needed. It is also not permitted to disassemble or modify the batteries.

The batteries must not be exposed to high temperatures or fire. Do not short circuit or modify the batteries in any way. Moisture can damage the batteries and cause corrosion or overheating, igniting or leaking. Do not expose the batteries to moisture or water.

Do not try to use any aftermarket charger with your OOLTER e-bike. Aftermarket chargers may damage the batteries or cause injuries, a fire or an electric shock. Never charge lithium batteries unattended.

OOLTER e-bikes use lithium-ion batteries which do not last forever and will deteriorate over time. The batteries begin to degrade from the point of manufacturing. This is due to a chemical reaction inside the battery, and gradually it causes the internal impedance of the cells to increase, which causes the battery to hold less charge. A new battery always performs better than an old one.

The LED markers on the display show the remaining capacity of the battery. Once the battery level has dropped below 30%, recharge as soon as possible. You should never leave a bike in storage with an empty battery.

Long term storage without recharging the battery can cause the battery to discharge too low and the battery protection electronics to lock up. A deeply discharged battery cannot be recharged and needs to be taken to an official service center to be repaired or replaced. To avoid this, the battery of an OOLTER e-bike needs to be charged to 50-60% before storage and recharged every two months, even if the bike is not being used.

A deeply discharged battery is not covered under warranty. Do not store it below freezing temperatures. Disposal: Your OOLTER e-bike uses sealed lithium-ion batteries, which must be recycled or disposed of in an environmentally safe manner according to the local laws.

10. Disposal At End-Of-Life

The OOLTER e-bike must not be disposed of by incineration, landfilling, or mixing with household trash. The improper disposal of lithium-ion batteries may result in the battery heating up, rupturing, or igniting which may cause serious injury or fires. The recommended disposal for any OOLTER bike at its end-of-life is to dispose of the entire unit at an e-waste recycling center, program, or facility. The local regulations and laws pertaining to the recycling and disposal of lithium-ion batteries and/or products containing them will vary by country, state, and local government. You must check the laws and regulations applicable in where you live in order to properly dispose of the battery and/or unit. It is the user's responsibility to dispose of their waste equipment properly in accordance with local regulations and laws.

For additional information about where you should drop off your electronic waste, please contact your local or regional waste-management office, your household waste disposal service, or your local OOLTER authorized dealer or service-provider.

11. Charger Safety

Read all the safety warnings and all the instructions. Failure to adhere to the warnings and instructions may result in an electric shock, fire and/or serious injury. Save all the safety warnings and instructions for future reference. Keep the charger away from moisture. The penetration of water into the battery charger increases the risk of an electric shock. Only charge your OOLTER e-bike using the original charger. Keep the battery charger clean. Dirt or oxidation can lead to a short circuit or the danger of an electric shock. Before each use, check the battery charger, the cable and the plug. If damaged, do not use the battery charger.

Never open the battery charger yourself. Have repairs performed only by a qualified technician using original spare parts. Damaged battery chargers, cables and plugs increase the risk of an electric shock. Do not operate the battery charger on easily inflammable surfaces (e. g. paper, textiles, etc.) or in easily inflammable surroundings. The battery charger heats up while charging, which is normal. Be aware of the heat, as it can pose a fire hazard. The battery can emit vapors or smoke in case of a damaged and improperly used battery pack. Ventilate the rooms and seek medical attention in the event of complaints. The vapors can irritate the respiratory system. Never try to charge a damaged battery pack. Supervise children at all times to ensure that they do not play with the charger. Children or persons that, owing to their physical, sensory or mental limitations or their lack of experience or knowledge, are not capable of securely operating the charger may only use this charger under supervision or after having been instructed by a responsible person. Otherwise, there is a danger of errors and injuries when operating.

Always connect the charger to the bike first and then plug the charger into a standard 100-240V wall outlet. Check to ensure that the LED light on the charger lights up. The LED light on the charger will turn from red to green once the e-bike is fully charged. Once charging is completed, unplug the charger from the wall outlet and then from the bike. Do not leave a fully charged bike connected to the charger, this will damage the batteries and can cause a fire hazard. Never charge lithium batteries unattended. Your batteries' capacity will decrease over time. However, if your battery does not hold sufficient charge even for a short trip, contact your OOLTER dealer or service-provider to order a replacement. The charger supplied with your OOLTER e-bike should be regularly examined for any damage to the cord, the plug and other parts. In the event of damage, do not use the charger until the charger has been repaired or replaced. If the charger emits unusual sounds or odors, stop using it immediately and contact our customer service. Observe the mains voltage! The voltage must correspond with the data given on the nameplate of the battery charger.

12. Maintenance

Here are a few tips and recommendations, how you can take care of your bike and enjoy it over a longer period of time.

Regularly check the tightening of the various bolted elements, in particular the mudguards, the wheel axles, the drivetrain, the pedals, the steering system and the brakes.

Cleaning - keeping your bike clean plays an important role in keeping its moving parts running reliably and smoothly. Clean your bike every once in a while. You may rinse it and use soap with a wet towel and a soft bristle brush. DO NOT use a hose or jet wash to clean the bike; this could damage the electronics and also strips the grease from the bike bearings. Do not wash the display or the charging port with water. The bike is IP45 class dust- and waterproof, but these spots are more vulnerable than others.

Check the tire pressure - you may refer to section 7 about recommended tire pressure, as well as check for the correct tire pressure on the sidewall of the tire.

Brakes - regularly check and clean the brakes. To check the brakes, squeeze the brake lever. The lever should feel firm and move consistently. The brake lever should not touch the handle- bar. You should also periodically check the condition of the brake pads. Make sure they are aligned well with the disc, are clean and do not have any oil or other greasy substances on them. If the brakes are no longer effective, then get the brakes professionally serviced.

Chain - periodically check the chain tension and if it has been sufficiently lubricated. Clean and add chain lubricant whenever necessary. Adjust the derailleur if the chain tension is too low or too high. In case the chain keeps skipping while you ride, it may be because the chain is worn (extended) or the teeth of the cogs are worn. In case the chain does not change gears properly, the chain may need some cleaning or the derailleur some adjustment. You need to get your bike professionally serviced in these cases.

OOLTER bikes maintenance schedule -

- Take your bike to a bike service after the first 500 km.
- After that you should have your bike professionally serviced once a year or every 1500km, whichever comes sooner.

Storage and battery care - make sure that the battery is charged about 50-60% while in storage. Check at least every two months for the charge level. If the charge level has decreased, recharge the battery to 50-60% level. Store the bike in a dry room at about 10 to 25°C.

⚠️WARNING! As with any mechanical component, a vehicle is subject to high stresses and wear. The various materials and components may react differently to wear and fatigue. If the expected service life for a component has been exceeded, it may break suddenly, therefore risking causing injuries to the user. Cracks, scratches and discoloration in the areas subject to high stresses indicate that the component has exceeded its service life and should be replaced.

13. Specifications

Model	Oolter EKE	Oolter ETTA	Oolter TORM	Oolter TORM S
Max Speed	25 km/h	25 km/h	25 km/h	25 km/h
Range	45-80 km*	45-80 km*	45-80 km*	45-80 km*
Max Load	120 kg	120 kg	120 kg	120 kg
Brakes	Disc brakes	Disc brakes	Disc brakes-	Disc brakes
Motor Nominal Power	250 W	250 W	250 W	250 W
Tires	28' / 700C x 35	28' / 700C x 35	28' / 700C x 32	28' / 700C x 25
Required height of the user	120 - 200 cm	120 - 200 cm	120 - 200 cm	120 - 200 cm
Recommended age	14+	14+	14+	14+
Nominal Battery Voltage	36 VDC	36 VDC	36 VDC	36 VDC
Nominal Battery Capacity	245 Wh	245 Wh	245 Wh	245 Wh
Charging Voltage	42 VDC	42 VDC	42 VDC	42 VDC
Charging Current	2 A	2 A	2 A	2 A
Charging Time	3.5 h	3.5 h	3.5 h	3.5 h
Working Temperature	-1 - +40 °C	-1 - +40 °C	-1 - +40 °C	-1 - +40 °C
Product Net Weight	22 kg	22 kg	18 kg	18 kg
Frame Size	52 / 55 cm	49 / 52 cm	52 / 55cm	52 / 55 cm
Pedal Assist System	Torque Sensing PAS with 5 levels of assist	Torque Sensing PAS with 5 levels of assist	Torque Sensing PAS with 5 levels of assist	Torque Sensing PAS with 5 levels of assist
Gears	7	7	9	9

*Depends on the riders weight, riding style, speed, assist level, terrain, temperature and wind.

14. Warnings



Failure to follow these instructions might lead to serious injury.

- DO NOT submerge any components of the bicycle in water. Water entering any of the electric components can cause permanent damage to the bicycle.
- DO NOT ride the bicycle if it has been damaged.
- DO NOT drive up or down stairs or jump off or over obstacles.
- DO NOT store your bicycle at temperatures of lower than 10°C.
- DO NOT touch the motor or the brake disc after riding, since it may get hot.
- DO NOT use your mobile phone while operating the bicycle.
- DO NOT ride your bicycle with one hand only or take both of your hands off the handlebar.
- DO NOT carry any passengers. The bicycle is designed to carry one person only.
- DO NOT exceed the 120kg load limit of the bicycle.
- DO NOT place items exceeding 15kg on the luggage carrier.
- DO NOT ride the bicycle while under the influence of alcohol or drugs.
- DO NOT attach heavy or loose items to the handlebar, as this will effect your ability to control the bicycle.
- DO NOT modify your bicycle or use accessories or additional items not approved by the manufacturer.
- DO NOT place your hands or other limbs into operating bike parts, what may cause a serious injury.
- Please also check warnings and instructions in sections "Charger" and "Battery" in this manual.
- Please do not use the e-bike if you believe that it is not functioning properly or it might be damaged in any way.
- OOLTER e-bikes are not intended for acrobatic use nor for commercial or rental use.
- Learn about the regulations applicable for e-bikes as well as the safety requirements.
- Stay alert, and chose a suitable riding speed while in traffic, to prevent accidents and injuries,
- Make yourself visible to others by keeping the lights, the reflectors and the bell in the working condition.
- Take care of your bike and perform preventive maintenance to achieve the best performance and durability.
- Wearing a helmet helps to reduce the risk of a serious injury.

15. Warranty

OOLTER bikes have 5-years warranty for the frame, and 1-year warranty for electronics starting from the shipping date. Please check for the latest detailed warranty terms and conditions on our website at www.oolter.com.

All components are guaranteed against manufacturing defects (materials and workmanship). This warranty does not cover normal wear and tear, tires, tubes, brake cables and pads, or any damage, failure or loss caused by improper assembly, maintenance, storage or use of the e-bike. Warranty does not cover follow-up maintenance, modifications or later integration of accessories.

This warranty will be void if the product is ever:

- used in a manner other than for personal recreation or transportation;
- rented;
- used for commercial purposes.

The warranty is valid in the European Union, the United Kingdom, Norway and Switzerland, with the exception of EU-Outermost Regions and UK Crown Dependencies.

In case of any defect or error, the bike should not be used before repair. All defects under warranty shall be fixed or the defective components replaced. No cash refunds are offered in case of defects under this warranty.

Damages during transport should be noted and signed upon the delivery act. The client is obliged to inform the seller about transport damages immediately, latest in one week from the delivery.

The manufacturer or the distributor, the seller or the service-provider is not liable for any incidental or consequential loss or damage due directly or indirectly to the use of this product.

Please keep your original proof of purchase in a safe place. It will be required in the event of a warranty claim.

16. Disclaimer, Copyright Notice and Trademarks

The performance, information and specifications of the OOLTER e-bikes and other related products manufactured by or sold under the license of Fortunati Group EU (FGEU) and featured in this document may change without notice. It is the responsibility of the user to determine the appropriate and safe conditions to use the products and to periodically check the product to ensure its secure and proper operation.

To the extent permitted by law, any liability that may be incurred as a result of the use of a product manufactured by or sold under a license granted by FGEU is limited to the cost of repairing or replacing the failed product or component at the discretion of FGEU and does not extend to any loss or damage which may be caused as a consequence of the misuse or failure of the product. Damage to the product, other property or any persons are the responsibility of the user of the OOLTER product.

By using a product manufactured by or sold under a license granted by FGEU, you state that you have read this disclaimer and agree to hold FGEU, as well as the EU distributor, their owners and any of their employees or directors free from all liabilities, and that you agree to use and operate the product at your own risk.

The illustrations in the manual are for demonstration purposes only. The illustrations may not reflect the exact appearance of the actual product. The specifications are subject to change without notice.

© Copyright Fortunati Group EU. All rights reserved.

OOLTER and FGEU are registered trademarks of FGEU. The trademarks and logo of OOLTER as well as FGEU cannot be used without the express written approval by FGEU.

Standards

The OOLTER e-bikes are manufactured in EU in accordance with EU directive EN15194:2017 on e-bikes.

17. Contact

OOLTER electric bikes are designed and manufactured by: Fortunati Group EU. More information is available on the OOLTER website: www.oolter.com, Contact email: ride@oolter.com.

Distributor in Europe: Fortunati Distribution LTD
Telliskivi 57D, 10412, Tallinn, Estonia
Tel: +372 56 808 138, e-mail: oolter@fortunati.eu

www.fortunati.eu